

**Technics**<sup>®</sup>

OTTAVA<sup>™</sup> *f*



# Basic Operating Instructions

Compact Stereo System

SC-C70MK2

Music is borderless and timeless, touching people's hearts across cultures and generations. Each day the discovery of a truly emotive experience from an unencountered sound awaits. Let us take you on your journey to rediscover music.

Rediscover Music™

**Technics**

# Delivering the Ultimate Emotive Musical Experience to All

At Technics we understand that the listening experience is not purely about technology but the magical and emotional relationship between people and music.

We want people to experience music as it was originally intended and enable them to feel the emotional impact that enthuses and delights them.

Through delivering this experience we want to support the development and enjoyment of the world's many musical cultures. This is our philosophy.

With a combination of our love of music and the vast high-end audio experience of the Technics team, we stand committed to building a brand that provides the ultimate emotive musical experience by music lovers, for music lovers.

Director  
Michiko Ogawa

A handwritten signature in black ink that reads "Michiko Ogawa". The signature is written in a cursive, flowing style with a long horizontal stroke extending to the right at the bottom.

Thank you for purchasing this product.

Please read these instructions carefully before using this product, and save this manual for future use.

- About descriptions in these operating instructions
  - Pages to be referred to are indicated as “⇒ ○○”.
  - The illustrations shown may differ from your unit.

- A more detailed operating instruction is available in “Operating Instructions” (PDF format). To read it, download it from the website.  
[www.technics.com/support/downloads/oi/SC-C70MK2.html](http://www.technics.com/support/downloads/oi/SC-C70MK2.html)
- You will need Adobe Reader to browse or print “Operating Instructions” (PDF format). You can download and install a version of Adobe Reader that you can use with your OS from the following website.  
<http://get.adobe.com/reader/>



## Sales and Support Information

### Customer Communications Centre

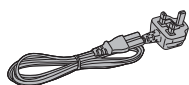
- For customers within the UK: 0333 222 8777
- For customers within Ireland: +353 1 912 4460
- Monday–Friday 9:00 am – 5:00 pm, (Excluding public holidays).
- For further support on your product, please visit our website: [www.technics.com/uk/](http://www.technics.com/uk/)

# Table of contents

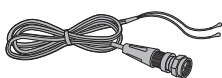
Safety precautions	05
Installation	07
Control reference guide	08
Connections	11
Network settings	12
Playing back CDs	16
Listening to DAB/DAB+ / FM Radio	17
Using Bluetooth®	18
Licenses	19
Specifications	20

# Accessories

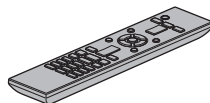
AC mains lead (1)  
K2CT3DR00009



DAB antenna (1)  
N1EYYY000015



Remote control (1)  
N2QAYA000221



Batteries for remote control (2)



- Product numbers provided in these operating instructions are correct as of August 2020.
- These may be subject to change.
- Do not use AC mains lead with other equipment.

## Warning

### Unit

- To reduce the risk of fire, electric shock or product damage,
  - Do not expose this unit to rain, moisture, dripping or splashing.
  - Do not place objects filled with liquids, such as vases, on this unit.
  - Use only the recommended accessories.
  - Do not remove covers.
  - Do not repair this unit by yourself. Refer servicing to qualified service personnel.
  - Do not let metal objects fall inside this unit.
  - Do not place heavy items on this unit.

### AC mains lead

- To reduce the risk of fire, electric shock or product damage,
  - Ensure that the power supply voltage corresponds to the voltage printed on this unit.
  - Insert the mains plug fully into the socket outlet.
  - Do not pull, bend, or place heavy items on the lead.
  - Do not handle the plug with wet hands.
  - Hold onto the mains plug body when disconnecting the plug.
  - Do not use a damaged mains plug or socket outlet.
- The mains plug is the disconnecting device. Install this unit so that the mains plug can be unplugged from the socket outlet immediately.
- Ensure the earth pin on the mains plug is securely connected to prevent electrical shock.
  - An apparatus with CLASS I construction shall be connected to a mains socket outlet with a protective earth connection.

## Caution

### Unit

- Do not place sources of naked flames, such as lighted candles, on this unit.
- This unit may receive radio interference caused by mobile telephones during use. If such interference occurs, please increase separation between this unit and the mobile telephone.
- This unit is intended for use in moderate and tropical climates.
- Do not put any objects on this unit. This unit becomes hot while it is on.
- This unit utilizes a laser. Use of controls or adjustments or performance of procedures other than those specified herein may result in hazardous radiation exposure.
- Do not look at the laser with an observation optical system like magnifying glass, however it does not affect the human health.
- Keep magnetic items away from the product. Powerful magnets inside the top cover and disc tray part may damage debit cards, travel cards (transit passes), clocks and other objects.

### Placement

- Place this unit on an even surface.
- To reduce the risk of fire, electric shock or product damage,
  - Do not install or place this unit in a bookcase, built-in cabinet or in another confined space. Ensure this unit is well ventilated.
  - Do not obstruct this unit's ventilation openings with newspapers, tablecloths, curtains, and similar items.
  - Do not expose this unit to direct sunlight, high temperatures, high humidity, and excessive vibration.
- Do not lift or carry this unit by holding the top cover or front of this unit. Doing so may cause this unit to fall, resulting in personal injury or malfunction of this unit.

# Safety precautions (Continued)

## Battery

- Danger of explosion if battery is incorrectly replaced. Replace only with the type recommended by the manufacturer.
- Mishandling of batteries can cause electrolyte leakage and may cause a fire.
  - Remove the battery if you do not intend to use the remote control for a long period of time. Store in a cool, dark place.
  - Do not heat or expose to flame.
  - Do not leave the battery(ies) in a car exposed to direct sunlight for a long period of time with doors and windows closed.
  - Do not take apart or short circuit.
  - Do not recharge alkaline or manganese batteries.
  - Do not use batteries if the covering has been peeled off.
  - Do not mix old and new batteries or different types at the same time.
- When disposing of the batteries, please contact your local authorities or dealer and ask for the correct method of disposal.
- Avoid the use in the following conditions
  - High or low extreme temperatures during use, storage or transportation.
  - Replacement of a battery with an incorrect type.
  - Disposal of a battery into fire or a hot oven, or mechanically crushing or cutting of a battery, that can result in an explosion.
  - Extremely high temperature and/or extremely low air pressure that can result in an explosion or the leakage of flammable liquid or gas.

## Speakers

- Be cautious when children are near.
- Do not insert a finger into the bass reflex ports on the rear of this unit. Pay close attention to children as doing so may cause personal injury.
- Do not carry this unit by holding the subwoofer of the bottom of this unit.
- Do not touch the speaker diaphragm on the bottom of this unit. Doing so may deform the diaphragm, and as a result, sound may not be output correctly.



(Back of product)

## Caution for AC Mains Lead

(For the AC mains plug of three pins)

For your safety, please read the following text carefully.

This appliance is supplied with a moulded three pin mains plug for your safety and convenience. A 3-ampere fuse is fitted in this plug.

Should the fuse need to be replaced please ensure that the replacement fuse has a rating of 3-ampere and that it is approved by ASTA or BSI to BS1362.

Check for the ASTA mark  or the BSI mark  on the body of the fuse.

If the plug contains a removable fuse cover you must ensure that it is refitted when the fuse is replaced.

If you lose the fuse cover the plug must not be used until a replacement cover is obtained.

A replacement fuse cover can be purchased from your local dealer.

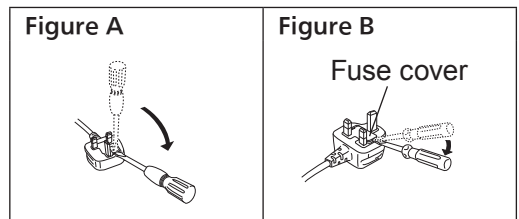
### Before use

Remove the connector cover.

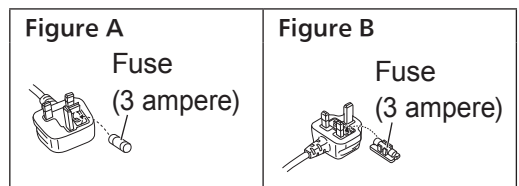
### How to replace the fuse

The location of the fuse differ according to the type of AC mains plug (figures A and B). Confirm the AC mains plug fitted and follow the instructions below. Illustrations may differ from actual AC mains plug.

1. Open the fuse cover with a screwdriver.



2. Replace the fuse and close or attach the fuse cover.



## Installation

Turn off all the equipment before connection and read the appropriate operating instructions. Be sure to raise this unit when moving, and do not drag this unit.

- Do not carry this unit by holding the subwoofer of the bottom of this unit.

## Notes on the speakers

These speakers do not have magnetic shielding. Do not place them near TV, PC or other equipment easily influenced by magnetism.

- Playing music at high volumes for a long period can cause damage to the system and shorten the life of the system.
- Decrease the volume in the following conditions to prevent damage.
  - When playing distorted sound
  - When adjusting the sound quality
  - When turning on/off this unit

## For optimum sound effects

The quality and volume of the bass sound, sound localisation performance, sound ambience, etc. will change depending on the installation location of this unit, listening position, room conditions, and other factors. Refer to the information below when installing this unit.

### Determining the installation location

- Place this unit on a flat safe surface.
- To minimise the gap in audio quality between left and right, install this unit in the way that acoustic conditions (reflection and absorption of sound) around this unit can be the same.

### Adjusting the distances between this unit and the wall

- If you install this unit close to a wall or a corner, the bass sound will be more powerful, however, if the unit is too close to it, sound localisation performance and sound ambience may deteriorate. If this occurs, adjust the distance between this unit and the wall.

### Adjusting with the Space Tune function

- You can adjust the sound quality automatically according to the installation location (near the wall or the corner of the room). Press and hold [SETUP] ([SPACE TUNE AUTO]) to start the sound adjustment.
- A test tone outputs quite big while the measurement is in progress.
- To cancel the adjustment in the middle, press [■].
- When the adjustment is complete, "Success" is displayed.
- You can also start the adjustment by pressing and holding [▶/||] on the unit for 5 seconds. Press [▶/||] again while "Space Tune (Auto)" is displayed.

## Unit care

Pull out the AC mains lead from the socket before maintenance. Clean this unit with a soft cloth.

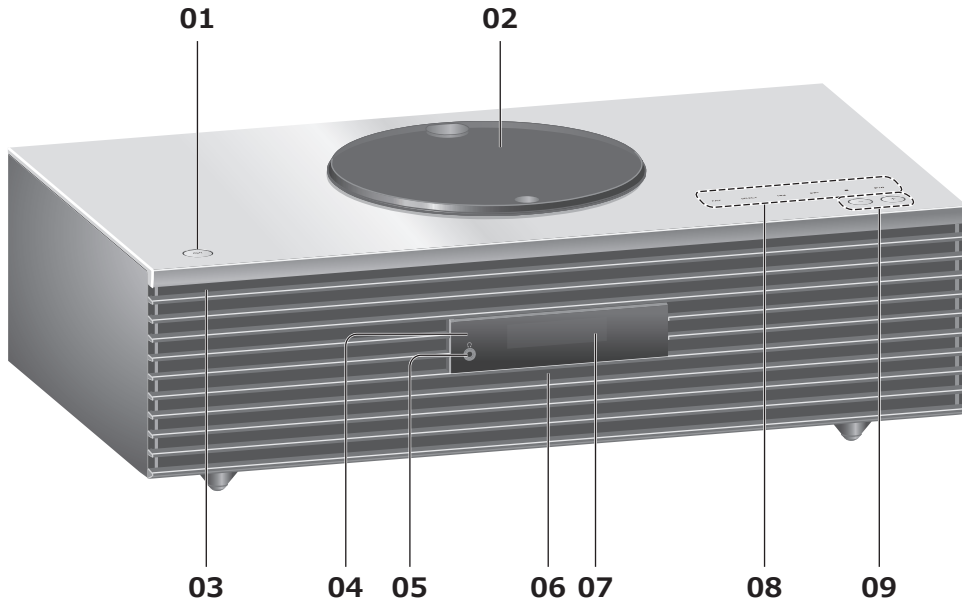
- When dirt is heavy, wring a wet cloth tightly to wipe the dirt, and then wipe it with a soft cloth.
- Do not use solvents including benzine, thinner, alcohol, kitchen detergent, chemical wiper, etc. Doing so may cause the exterior case to be deformed or the coating to come off.

## To dispose of or transfer this unit

Before disposing of or transferring this unit, be sure to erase all the recorded information by restoring the settings to factory default.

- ① Press [SETUP].
- ② Press [▲], [▼] repeatedly to select "Initialization" and then press [OK].
- ③ Press [▲], [▼] to select "Yes" and then press [OK].
  - A confirmation screen appears. Select "Yes" in the following steps to restore all the settings to defaults.
- ④ Press [▲], [▼] to select "Yes" and then press [OK] again.
  - Before you dispose of or transfer this unit to a third party, be sure to log out of your music streaming services accounts to prevent unauthorised use of your accounts.

## This unit (front)



### 01 Standby/on switch (⏻/⏻)

- Press to switch the unit from on to standby mode or vice versa. In standby mode, the unit is still consuming a small amount of power.

### 02 Top cover

- The top cover can slide to the both sides.
- The magnet is built-in to keep the top cover closing.
- Do not apply too much force to the top cover when sliding it. Doing so may cause malfunction.
- Do not leave the top cover open for a prolonged period. Doing so will cause the lens to become dirty.

(⇒ 16)

### 03 Power indicator

- Blue: The unit is on.
- Off: The unit is in standby mode.

### 04 Remote control signal sensor

- Reception distance:  
Within approx. 7 m directly in front
- Reception angle:  
Approx. 30° left and right

### 05 Headphones jack

- When a plug is connected, the speakers do not output sound.
- Excessive sound pressure from earphones and headphones can cause hearing loss.
- Listening at full volume for long periods may damage the user's ears.

### 06 Built-in microphone (for measurement)

### 07 Display

- Input source, clock, playback status, etc. are displayed.

### 08 Touch switches

- [FAV]:  
Select the favourite radio station or playlist (DAB/DAB+, FM, Internet Radio, Podcasts, etc.)
- [SELECT]:  
Switch the input source
- [◀◀], [▶▶], [■], [▶/||]:  
Playback operation buttons (e.g. "CD")

Stop	[■]
Pause	[▶/  ] • Press again to resume.
Skip	[◀◀] [▶▶]
Search	Press and hold [◀◀] or [▶▶].

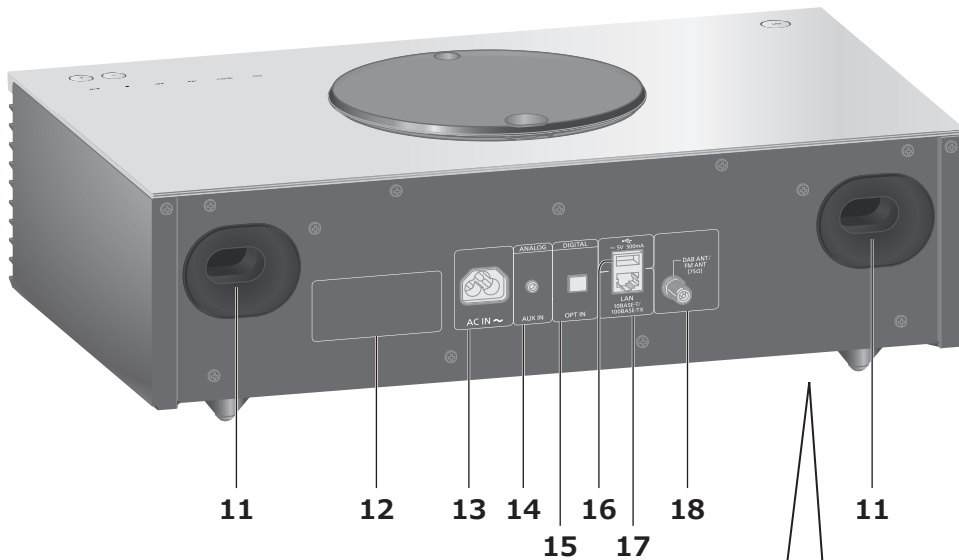
- Each time you press the switch, a beep sound will be heard.
- Do not put any objects on the top panel of this unit.

### 09 Adjust volume

- 0 (min) to 100 (max)



## This unit (rear)



### 11 Bass reflex port

### 12 Product identification marking

- The model number is indicated.

### 13 AC IN terminal (⌚)

(⇒ 11)

### 14 AUX IN terminal

- You can connect a portable audio player, etc. with an analogue audio cable (not supplied) and play back music.

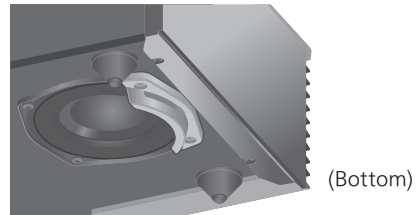
### 15 Optical digital input terminal

- You can connect a DVD player, etc. with optical digital audio cable (not supplied) and play back music.
- The digital audio input terminal of this unit can only detect the following linear PCM signals. For details, refer to the operating instructions of the connected device.
  - Sampling frequency:  
32/44.1/48/88.2/96 kHz
  - Number of quantisation bits:  
16/24 bit

### 16 USB-A terminal $\equiv$ DC 5 V 500 mA

- You can connect a USB device to the unit and play back music stored on the USB device.
- This unit does not guarantee connection with all USB devices.  
A more detailed operating instruction is available in "Operating Instructions" (PDF format).  
[www.technics.com/support/](http://www.technics.com/support/)
- Depending on a thickness of USB device, you may not connect USB device while LAN cable is connected.

### 10 Subwoofer



- Do not install this unit on the rough surface. Doing so may cause the subwoofer to be damaged.
- Do not hold the subwoofer when carrying this unit.



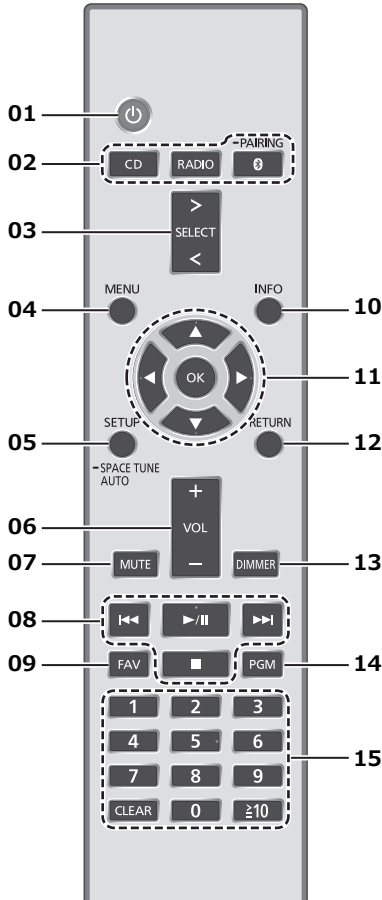
### 17 LAN terminal

(⇒ 13)

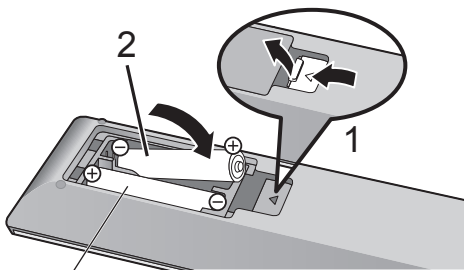
### 18 DAB ANT / FM ANT terminal

(⇒ 11, 17)

## Remote control



### ■ Using the remote control



R03/LR03, AAA  
(Alkaline or manganese batteries)

#### Note

- Insert the battery so the terminals (⊕ and ⊖) match those in the remote control.
- Point it at the remote control signal sensor on this unit. (⇒ 08)
- Keep the batteries out of reach of children to prevent swallowing.

#### 01 [⏻]: Standby/on switch

- Press to switch the unit from on to standby mode or vice versa. In standby mode, the unit is still consuming a small amount of power.

#### 02 [CD]/[RADIO]/[⊗-PAIRING]: Select the device to be operated (⇒ 16, 17, 18)

#### 03 [>SELECT<]: Switch the input source

#### 04 [MENU]: Enter menu (⇒ 16, 17, 18)

#### 05 [SETUP] ([-SPACE TUNE AUTO]): Enter setup menu

- Press and hold [SETUP] ([-SPACE TUNE AUTO]) to start the adjustment with the Space Tune function. (⇒ 07)

#### 06 [+VOL-]: Adjust the volume

- 0 (min) to 100 (max)

#### 07 [MUTE]: Mute the sound

- Press [MUTE] again to cancel. "MUTE" is also cancelled when you adjust the volume or when you turn the unit to standby.

#### 08 Playback operation buttons

#### 09 [FAV]: Select the favourite radio station or playlist (DAB/DAB+, FM, Internet Radio, Podcasts, etc.)

- You can register up to 9 favourite stations. To register, press and hold [FAV] while the favourite station or playlist is played back, select the number to register and then press [OK].

#### 10 [INFO]: View content information

- Press this button to display the track, artist, and album names, file type, sampling frequency, and other information. (The information varies depending on the input source.)

#### 11 [▲], [▼], [◀], [▶]/[OK]: Selection/OK

#### 12 [RETURN]: Return to the previous display

#### 13 [DIMMER]: Adjust the brightness of the display, etc.

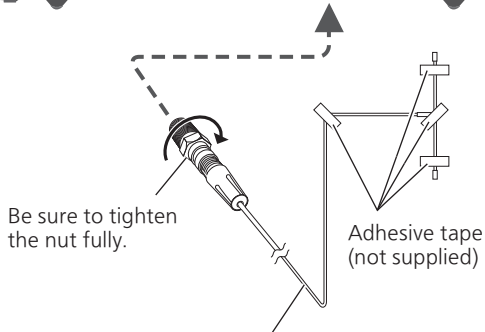
- When the display is turned off, it will light up for a few seconds only when you operate this unit. Before the display turns off, "Display Off" will be displayed for a few seconds.
- Press repeatedly to switch the brightness.

#### 14 [PGM]: Set the programme function

#### 15 Numeric buttons, etc.

- To select a 2-digit number  
Example:  
16: [≥10] > [1] > [6]
- To select a 4-digit number  
Example:  
1234: [≥10] > [≥10] > [≥10] > [1] > [2] > [3] > [4]
- [CLEAR]: Clear the entered value.

## Antenna connection

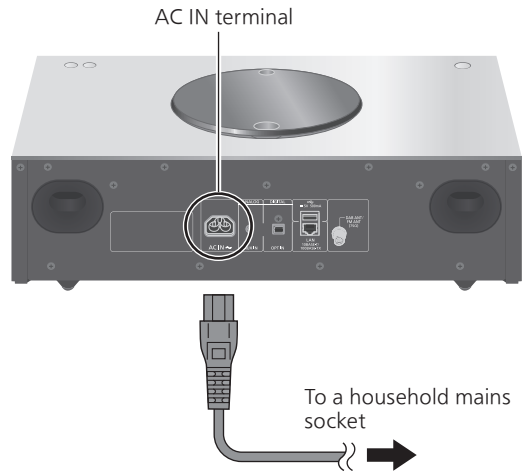


DAB indoor antenna (supplied)

- This unit can receive DAB+ and FM stations with the DAB antenna.
- Tape the antenna to a wall or column at the position with the least amount of interference.
- If radio reception is poor, use a DAB outdoor antenna (not supplied).

## AC mains lead connection

Connect only after all other connections are completed.



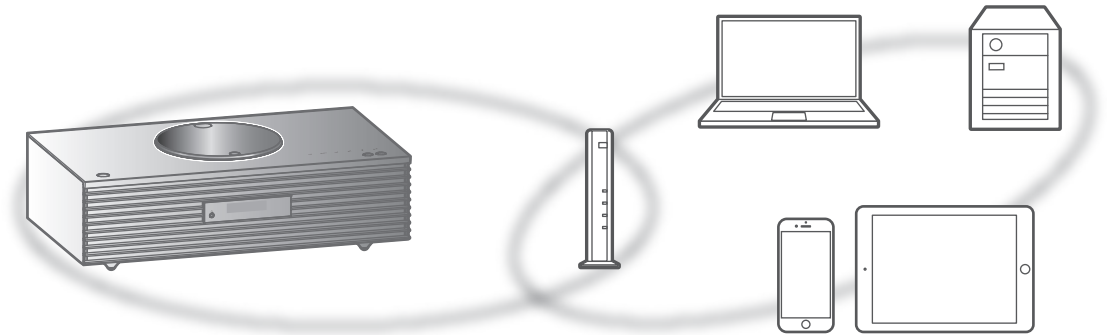
- Use only the supplied AC mains lead.
- Do not connect the AC mains lead until all other connections are complete.
- Insert the plugs of the cables to be connected all the way in.
- Do not bend cables at sharp angles.
- Wireless LAN (Wi-Fi®) setting may start when this unit is turned on. If you stop the Wi-Fi setting, select "No" in "Wi-Fi Setup" screen. Select "Yes" to keep the Wi-Fi setting. (⇒ 13)

### Note

- This unit consumes a small amount of AC power (⇒ 20) even when the unit is in standby mode. Remove the plug from the main electrical outlet if you will not be using the unit for an extended period of time. Place the unit so the plug can be easily removed.

# Network settings

You can stream online music services or music files from your smartphone/tablet to this unit. To use these features, this system must join the same internet-connected network as the compatible device.



This unit can be connected to a router using a LAN cable or built-in Wi-Fi®. For a stable connection to the network, a wired LAN connection is recommended.

## Note

- If you try to change the network settings immediately after turning on this unit, it may take some time until the network setup screen is displayed.
- If “Firmware update is available” is displayed after the network connection is set up, the firmware for this unit is available.
  - For the update information, refer to the following website.  
[www.technics.com/support/firmware/](http://www.technics.com/support/firmware/)

## ■ Preparation

If you install the “Google Home” app on your smartphone/tablet, you can set up a connection using the application.

- When using the Google Cast™-enabled apps to play music on this unit, set up a connection using the “Google Home” app.
- Make sure that the Wi-Fi function is activated on your smartphones/tablet.

## 1 Install the “Google Home” app on your smartphone/tablet.

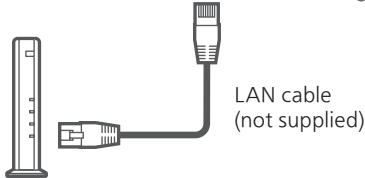
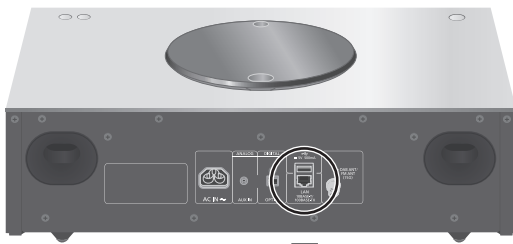
- To download the “Google Home” app, visit:  
<https://www.google.com/cast/setup/>



## 2 Connect your smartphone/tablet to the same network as this unit before setting.

- Make sure that the network is connected to the Internet.

## Wired LAN connection



Broadband router, etc.

- 1 Disconnect the AC mains lead.
- 2 Connect this unit to a broadband router, etc. using a LAN cable.
- 3 Connect the AC mains lead to this unit, and press [⏻]. (⇒ 11)
  - When the connection is established, "📶" is displayed.
- 4 Press [>SELECT<] to select "Google Cast".
- 5 Start the "Google Home" app and follow the on-screen instructions to set up a connection. (⇒ 14)

### Note

- While the AC mains lead is disconnected, the LAN cable must be connected or disconnected.
- Use category 7 or above straight LAN cables (STP) when connecting to peripheral devices.
- Inserting any cable other than a LAN cable in the LAN port can damage the unit.
- When a LAN cable is connected, the Wi-Fi function may be disabled.

## Wireless LAN connection

### ■ Preparation

- ① Disconnect the AC mains lead.
- ② Disconnect the LAN cable.
- ③ Place this unit as close to the wireless router as possible.
- ④ Connect the AC mains lead to this unit. (⇒ 11)

### Note

- The setting will be cancelled after the set time limit. In that case, try the setting again.
- To cancel this setting in the middle, press [■] or turn the unit to standby mode.
- When the connection is established, "📶" is displayed. (⇒ 14)

## Network setting for the first time using the "Google Home" app

- 1 Press [⏻] to turn this unit on.
  - "Wi-Fi Setup" is displayed.
- 2 Press [▲], [▼] to select "Yes" and then press [OK].
- 3 Start the "Google Home" app and follow the on-screen instructions. (⇒ 14)

### Note

- This unit will be displayed as "Technics-SC-C70MK2-\*\*\*\*" if the device name is not set. ("\*\*\*\*" stands for characters unique to each set.)
- You can check your network information (SSID, MAC address and IP address) from the "Google Home" app or "Technics Audio Center" app.
- Some items on the "Google Home" app are irrelevant to this unit.
- When this unit is switched to standby mode and turned on before the Wi-Fi setting is complete, "Wi-Fi Setup" is displayed. Set "Wi-Fi Menu" to "Off" to turn off the display.

Setting the network from the setup menu

- 1 Press [**>**SELECT<] to select “Google Cast”.
- 2 Press [SETUP].
- 3 Press [**▲**], [**▼**] repeatedly to select “Network” and then press [OK].
  - When “Wi-Fi Menu” screen is displayed, press [OK].
- 4 Press [**▲**], [**▼**] to select “On” and then press [OK]. (The wireless LAN menu is enabled.)
- 5 Press [**▲**], [**▼**] to select “Wi-Fi Setup” and then press [OK].
  - “Setting” is displayed.
- 6 Start the “Google Home” app and follow the on-screen instructions. (As follows)

### ■ Using the “Google Home” app “Wi-Fi Setup”

When using the Google Cast-enabled apps to play music on this unit, you need to set up a network connection using “Google Home” app.

#### 1 Start the “Google Home” app and follow the on-screen instructions to set up a connection.

- When the connection is established, “Success” is displayed.
  - “Fail” may be displayed if the connection was not complete. Try this method again from the setup menu. If “Fail” is still displayed, try other methods.

#### 2 Press [OK] to exit the setting.

##### Note

- This unit will be displayed as “Technics-SC-C70MK2-\*\*\*\*” if the device name is not set. (“\*\*\*\*” stands for characters unique to each set.)
- You can check your network information (SSID, MAC address and IP address) from the “Google Home” app or “Technics Audio Center” app.
- Some items on the “Google Home” app are irrelevant to this unit.

## Streaming music over the network

This unit is compatible with Google Cast-enabled apps. For detailed information of Google Cast-enabled apps, visit:

[g.co/cast/apps](http://g.co/cast/apps)

You can also stream music files from the device on your network to this unit by using the free app "Technics Audio Center". Download and install the app from the website below.

[www.technics.com/support/](http://www.technics.com/support/)

### ■ Preparation

- Complete the network settings. (⇒ 12)  
(Make sure that the network is connected to the Internet.)
- Install the supported application on your device.
- Connect the device to the network currently used at home.

**1 Start the Google Cast-enabled app or "Technics Audio Center" app on your device (smartphone, tablet, etc.), and select this unit as the output speaker.**

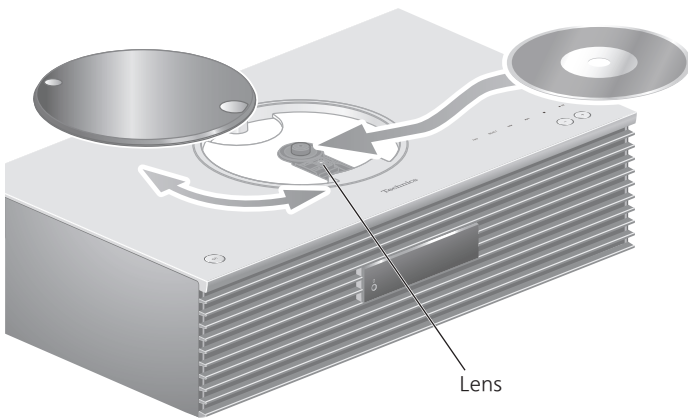
**2 Play back the music.**

Not all music streaming services are available in all countries/regions. Registration/subscription may be required, or fees may be charged to use music streaming services. Services are subject to change or be discontinued. For details, visit an individual music streaming service's website.

### Important notice:

Before you dispose of or transfer this unit to a third party, be sure to log out of your music streaming services accounts to prevent unauthorised use of your accounts.

# Playing back CDs



**1 Press [⏻] to turn this unit on.**

**2 Press [CD].**

**3 Open the top cover with a sliding motion and then insert the CD.**

- The top cover can slide to the both sides.
- Place the CD with its label facing up, and push the centre of the CD until a clicking sound is heard.

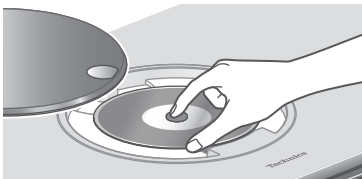
**4 Close the top cover with a sliding motion.**

- This unit cannot play back the CD while the top cover is open.

**5 Press [▶/||].**

## ■ To eject the CD

- ① Open the top cover with a sliding motion.
- ② Eject the CD.



- Be careful not to hit the CD with the top cover.
- Eject the CD after the CD has stopped turning.

## Note

- Be careful not to get your finger caught in the top cover when opening/closing it.
- Be careful not to touch the lens with your fingers.
- The lens lights when the following operations are performed with no CD inserted. This is not a malfunction.
  - When turning the power on
  - When selecting "CD" as the input source
  - When opening and closing the top cover

## ■ Repeat Playback/Random repeat playback

- ① Press [MENU].
  - ② Press [▲], [▼] repeatedly to select "Repeat"/"Random" and then press [OK].
  - ③ Press [▲], [▼] repeatedly to an item and then press [OK].
- During random playback, you cannot skip to the previous track.

## ■ Programme playback

- ① Press [PGM] in the stop mode.
    - "Program Mode" screen is displayed.
  - ② Press the numeric buttons to select tracks.
    - Repeat this step to make further selections.
  - ③ Press [▶/||] to start playback.
- Press [◀] or [▶] in the stop mode to check the programmed order.
  - Press [CLEAR] in the stop mode to clear the last track.
  - Press [PGM] in the stop mode to cancel the programme mode, and the programme memory will be stored.
  - Press [■] in the stop mode and select "Yes" to cancel the programme mode. (The programme memory will be cleared.)

## Note

- The programme memory is cleared when replacing the CD.
- The programme mode is cancelled when the random repeat playback is set.



## Storing DAB/DAB+ stations

To listen to DAB/DAB+ broadcasts, the available stations need to be stored in this unit.

- This unit will automatically start scanning and store the stations available in your region if the memory is empty.

**1 Press [RADIO] to select "DAB/DAB+".**

**2 "Auto Scan" starts automatically.**

- "Scan Failed" is displayed if the auto scan is unsuccessful. Locate the position with the best reception (⇒ 11) and then re-scan DAB/DAB+ stations.

### ■ To listen to the stored DAB/DAB+ stations

- ① Press [MENU].
- ② Press [▲], [▼] repeatedly to select "Tuning Mode" and then press [OK].
- ③ Press [▲], [▼] to select "Station" and then press [OK].
- ④ Press [◀◀], [▶▶] to select the station.

## Presetting DAB/DAB+ stations

You can preset up to 20 DAB/DAB+ stations.

**1 Press [RADIO] to select "DAB/DAB+".**

**2 Press [PGM] while listening to a DAB broadcast.**

**3 Press [◀◀], [▶▶] to select the desired preset channel, and then press [PGM].**

- Presetting is not available when the station is not broadcasting or when the secondary service is selected.
- The station occupying a channel is erased if another station is preset in that channel.

### ■ To listen to preset DAB/DAB+ stations

- ① Press [MENU].
- ② Press [▲], [▼] repeatedly to select "Tuning Mode" and then press [OK].
- ③ Press [▲], [▼] to select "Preset" and then press [OK].
- ④ Press [◀◀], [▶▶] or numeric buttons to select the station.

## Storing FM stations

You can preset up to 30 channels.

- A station previously stored is overwritten when another station is selected for the same channel by presetting.

**1 Press [RADIO] repeatedly to select "FM".**

**2 Press [MENU].**

**3 Press [▲], [▼] repeatedly to select "Auto Preset" and then press [OK].**

**4 Press [▲], [▼] to select an item and then press [OK].**

### Lowest:

To begin the auto preset with the lowest frequency (FM 87.50).

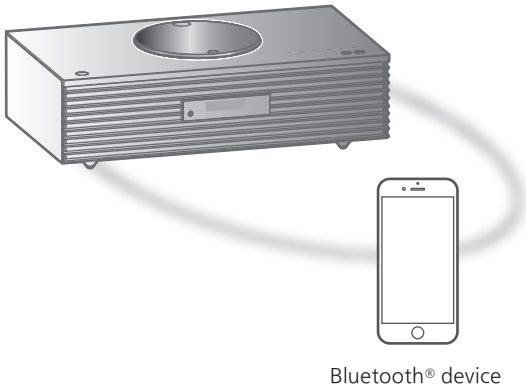
### Current:

To begin the auto preset with the current frequency.

- The tuner starts to preset all the stations it can receive into the channels in ascending order.
- The factory default is "Lowest".

### ■ To listen to preset FM channel

- ① Press [MENU].
- ② Press [▲], [▼] repeatedly to select "Tuning Mode" and then press [OK].
- ③ Press [▲], [▼] to select "Preset" and then press [OK].
- ④ Press [◀◀], [▶▶] or numeric buttons to select the channel.



## Pairing a Bluetooth® device

- Turn on the Bluetooth® feature of the device and place the device near this unit.
- If a Bluetooth® device is already connected, disconnect it.

### 1 Press [Ⓚ-PAIRING].

- When “Pairing” is indicated on the display, proceed to step 5.

### 2 Press [MENU].

### 3 Press [▲], [▼] repeatedly to select “Pairing” and then press [OK].

### 4 Press [▲], [▼] to select “Yes” and then press [OK].

- “Pairing” is displayed, and this unit waits for registering.

### 5 Select “Technics-SC-C70MK2-\*\*\*\*” from the Bluetooth® device’s menu.

- The name of the connected device is indicated on the display.
- The MAC address “\*\*\*\*” (“\*\*\*\*” stands for a character that is unique to each set.) may be displayed before “Technics-SC-C70MK2-\*\*\*\*” is displayed.
- If the device name is set on the “Google Home” app, the set name is displayed.

#### Note

- You can also enter pairing mode by pressing and holding [Ⓚ-PAIRING] when the input source is “Bluetooth”.
- If prompted for the passkey, input “0000”.
- You can register up to 8 devices with this unit. If a 9th device is paired, the device that has not been used the longest will be replaced.

## Listening to music stored on a Bluetooth® device

### 1 Press [Ⓚ-PAIRING].

- “Ready” or “Pairing” is indicated on the display.

### 2 Select “Technics-SC-C70MK2-\*\*\*\*” from the Bluetooth® device’s menu.

- The name of the connected device is indicated on the display.
- If the device name is set on the “Google Home” app, the set name is displayed.

### 3 Start playback on the Bluetooth® device.

#### Note

- Refer to the operating instructions of the Bluetooth® device for details.
- This unit can only be connected to one device at a time.
- When “Bluetooth” is selected as the input source, this unit will automatically try and connect to the last connected Bluetooth® device. (“Linking” is displayed during this process.)

## Disconnecting a Bluetooth® device

### 1 Press [MENU].

### 2 Press [▲], [▼] repeatedly to select “Disconnect?” and then press [OK].

### 3 Press [▲], [▼] to select “Yes” and then press [OK].

#### Note

- The Bluetooth® device will be disconnected if a different audio source is selected.



The Wi-Fi CERTIFIED™ Logo is a certification mark of Wi-Fi Alliance®.



Use of the Works with Apple badge means that an accessory has been designed to work specifically with the technology identified in the badge and has been certified by the developer to meet Apple performance standards.

Apple and AirPlay are trademarks of Apple Inc., registered in the U.S. and other countries.

This product is compatible with AirPlay 2. iOS 11.4 or later is required.



Google, Google Home and Google Cast are trademarks of Google LLC.

The Google Assistant is not available in certain languages and countries.

Android and Google Play are trademarks of Google Inc.

Windows is a trademark or a registered trademark of Microsoft Corporation in the United States and other countries.

Windows Media and the Windows logo are trademarks or registered trademarks of Microsoft Corporation in the United States and/or other countries. This product is protected by certain intellectual property rights of Microsoft Corporation and third parties. Use or distribution of such technology outside of this product is prohibited without a license from Microsoft or an authorized Microsoft subsidiary and third parties.

Mac and OS X are trademarks of Apple Inc., registered in the U.S. and other countries.

The Bluetooth® word mark and logos are registered trademarks owned by Bluetooth SIG, Inc. and any use of such marks by Panasonic Holdings Corporation is under license. Other trademarks and trade names are those of their respective owners.

“DSD” is a registered trademark.

FLAC Decoder

Copyright (C) 2000, 2001, 2002, 2003, 2004, 2005, 2006, 2007, 2008, 2009 Josh Coalson  
Redistribution and use in source and binary forms, with or without modification, are permitted provided that the following conditions are met:

- Redistributions of source code must retain the above copyright notice, this list of conditions and the following disclaimer.
- Redistributions in binary form must reproduce the above copyright notice, this list of conditions and the following disclaimer in the documentation and/or other materials provided with the distribution.
- Neither the name of the Xiph.org Foundation nor the names of its contributors may be used to endorse or promote products derived from this software without specific prior written permission.

THIS SOFTWARE IS PROVIDED BY THE COPYRIGHT HOLDERS AND CONTRIBUTORS “AS IS” AND ANY EXPRESS OR IMPLIED WARRANTIES, INCLUDING, BUT NOT LIMITED TO, THE IMPLIED WARRANTIES OF MERCHANTABILITY AND FITNESS FOR A PARTICULAR PURPOSE ARE DISCLAIMED. IN NO EVENT SHALL THE FOUNDATION OR CONTRIBUTORS BE LIABLE FOR ANY DIRECT, INDIRECT, INCIDENTAL, SPECIAL, EXEMPLARY, OR CONSEQUENTIAL DAMAGES (INCLUDING, BUT NOT LIMITED TO, PROCUREMENT OF SUBSTITUTE GOODS OR SERVICES; LOSS OF USE, DATA, OR PROFITS; OR BUSINESS INTERRUPTION) HOWEVER CAUSED AND ON ANY THEORY OF LIABILITY, WHETHER IN CONTRACT, STRICT LIABILITY, OR TORT (INCLUDING NEGLIGENCE OR OTHERWISE) ARISING IN ANY WAY OUT OF THE USE OF THIS SOFTWARE, EVEN IF ADVISED OF THE POSSIBILITY OF SUCH DAMAGE.

The Spotify Software is subject to third party licenses found here: <https://www.spotify.com/connect/third-party-licenses>.

# Specifications

## ■ GENERAL

Power supply	AC 220 V to 240 V, 50/60 Hz
Power consumption	45 W
Power consumption in standby mode (Network Standby Off & No clock display)	0.2 W
Power consumption in standby mode (Network Standby On & No clock display)	2.0 W*1
Dimensions (W×H×D)	450 mm × 143 mm × 280 mm
Mass	Approx. 8.0 kg
Operating temperature range	0 °C to 40 °C
Operating humidity range	35 % to 80 % RH (no condensation)

\*1: Wired LAN or Wireless LAN

## ■ AMPLIFIER SECTION

Output power	Front speaker (L/R): 30 W + 30 W (1 kHz, T.H.D. 1.0 %, 6 Ω, 20 kHz LPF) Subwoofer: 40 W (70 Hz, T.H.D. 1.0 %, 4 Ω, 20 kHz LPF)
--------------	-----------------------------------------------------------------------------------------------------------------------------------------------

## ■ TUNER SECTION

### Frequency Modulation (FM)

Preset memory	30 stations
Frequency range	87.50 MHz to 108.00 MHz (50 kHz step)
Antenna terminals	75 Ω (unbalanced)

### DAB

DAB memories	20 channels
Frequency band (wavelength)	Band III (All Band III): 5A to 13F (174.928 MHz to 239.200 MHz)
Sensitivity *BER 4x10 <sup>-4</sup>	Min requirement: -98 dBm
DAB external antenna terminal	F-Connector (75 Ω)

## ■ DISC SECTION

Playable Disc (8 cm or 12 cm)	CD, CD-R, CD-RW
Pickup	
Wavelength	790 nm (CD)
Laser power	CLASS 1
Format	CD-DA

## ■ SPEAKER SECTION

### Front speaker (L/R)

Type	2 way, 2 speaker (Closed)
Woofer	8 cm × 1/ch, Cone type
Tweeter	2 cm × 1/ch, Dome type

### Subwoofer

Type	1 way, 1 speaker (Bass reflex)
Subwoofer	12 cm × 1, Cone type

## ■ Bluetooth® SECTION

Bluetooth® system specification	Bluetooth® Ver.4.2
Wireless equipment classification	Class 2 (2.5 mW)
Supported profiles	A2DP, AVRCP
Supported codec	AAC, SBC
Frequency band	2.4 GHz band FH-SS
Operating distance	Approx. 10 m Line of sight*2

\*2: Prospective communication distance

Measurement environment:  
Temperature 25 °C/Height 1.0 m  
Measure in "Mode1"

## ■ TERMINALS SECTION

Headphones Jack	Stereo, $\phi$ 3.5 mm
USB	REAR USB Type A Connector
Support Memory Capacity	2 TB (max)
Maximum number of folders (albums)	800
Maximum number of files (songs)	8000
File system	FAT16, FAT32, NTFS
USB port power	DC OUT 5 V 0.5 A (max)
Ethernet interface	LAN (100BASE-TX/10BASE-T)
AUX Input	Stereo, $\phi$ 3.5 mm Jack
Digital Input	Optical digital input (Optical terminal)
Format support	LPCM

## ■ FORMAT SECTION

### USB-A

USB Standard	USB 2.0 high-speed USB Mass Storage class
--------------	----------------------------------------------

### Wi-Fi SECTION

Standard	IEEE802.11a / b / g / n / ac
Frequency Band	2.4 GHz band 5 GHz band
Security	WPA2™, Mixed mode WPA2™/ WPA™

- The WLAN feature of this product shall exclusively be used inside buildings.

# Specifications (Continued)

## ■ File format

This unit supports the following file formats.

- This unit does not support the playback of copy-protected music files.
- Playback of all files in formats supported by this unit is not guaranteed.
- Playback of a file in a format not supported by this unit may cause choppy audio or noise. In such cases, check to see if this unit supports the file format.
- This unit does not support VBR (Variable Bit Rate) playback.
- Some of the connected devices (servers) may be capable of converting files in formats not supported by this unit and output them. For details, refer to the operating instructions for your server.
- File information (sampling frequency, etc.) shown by this unit and playback software may differ from each other.

## USB-A

File format	Extension	Sampling frequency	Bit rate / Number of quantisation bits
MP3	.mp3	32/44.1/48 kHz	16 to 320 kbps
AAC	.m4a/.aac	32/44.1/48/88.2/96 kHz	16 to 320 kbps
WAV	.wav	32/44.1/48/88.2/96/176.4/192/352.8/384 kHz	16/24/32 bit
FLAC	.flac	32/44.1/48/88.2/96/176.4/192/352.8/384 kHz	16/24 bit
AIFF	.aiff	32/44.1/48/88.2/96/176.4/192/352.8/384 kHz	16/24/32 bit
ALAC	.m4a	32/44.1/48/88.2/96/176.4/192/352.8/384 kHz	16/24 bit
DSD	.dff/.dsf	2.8/5.6/11.2 MHz	

## LAN (DMR)\*

File format	Extension	Sampling frequency	Bit rate / Number of quantisation bits
MP3	.mp3	32/44.1/48 kHz	16 to 320 kbps
AAC	.m4a/.aac	32/44.1/48/88.2/96 kHz	16 to 320 kbps
WAV	.wav	32/44.1/48/88.2/96/176.4/192/352.8/384 kHz	16/24/32 bit
FLAC	.flac	32/44.1/48/88.2/96/176.4/192/352.8/384 kHz	16/24 bit
AIFF	.aiff	32/44.1/48/88.2/96/176.4/192/352.8/384 kHz	16/24/32 bit
ALAC	.m4a	32/44.1/48/88.2/96/176.4/192/352.8/384 kHz	16/24 bit
DSD	.dff/.dsf	2.8/5.6/11.2 MHz	

\*: Whether or not each music file can be played back over your network is determined by the network server even if the format of the file is listed above. For example, if you are using Windows Media Player 11, not all music files on the PC are playable. You can play back only those added to the library of Windows Media Player 11.

### Note

- Specifications are subject to change without notice.
- Mass and dimensions are approximate.

Panasonic Corporation, a company having its registered office of 1006, Oaza Kadoma, Kadoma City, Osaka 571-8501, Japan, automatically collects personal data such as IP address and/or Device ID from your device as soon as you connect it to the Internet. We do this to protect our customers and the integrity of our Service as well as to protect the rights or property of Panasonic.

You have a right of access, rectification and objection to in certain circumstances, a right of erasure, restriction of processing, data portability and a right to object to other forms of processing. If you wish to exercise any of the above rights and/or wish to know more about the processing of your personal data in this context, please refer to the full text of our privacy policy displayed at the support page of your device, <http://panasonic.jp/support/global/cs/audio/>, <http://www.technics.com/support/> or contact our customer communications/support number or address described in the Pan European Guarantee included in your device box to send you the full text of our privacy policy.

**Disposal of Old Equipment and Batteries**  
**Only for European Union and countries with recycling systems**



These symbols on the products, packaging, and/or accompanying documents mean that used electrical and electronic products and batteries must not be mixed with general household waste.

For proper treatment, recovery and recycling of old products and used batteries, please take them to applicable collection points in accordance with your national legislation.

By disposing of them correctly, you will help to save valuable resources and prevent any potential negative effects on human health and the environment.

For more information about collection and recycling, please contact your local municipality. Penalties may be applicable for incorrect disposal of this waste, in accordance with national legislation.



**Note for the battery symbol (bottom symbol):**

This symbol might be used in combination with a chemical symbol. In this case it complies with the requirement set by the Directive for the chemical involved.

**EU Declaration of Conformity (DoC)**

Hereby, "Panasonic Corporation" declares that this product is in compliance with the essential requirements and other relevant provisions of Directive 2014/53/EU.

Customers can download a copy of the original DoC to our RE products from our DoC server:

<https://www.ptc.panasonic.eu>

Contact to Authorised Representative:

Panasonic Marketing Europe GmbH, Panasonic Testing Centre, Winsbergring 15, 22525 Hamburg, Germany

5.15 - 5.35 GHz band is restricted to indoor operations only in the following countries.

AT	BE	BG	CZ	DK	EE	FR	DE	IS
IE	IT	EL	ES	CY	LV	LI	LT	LU
HU	MT	NL	NO	PL	PT	RO	SI	SK
TR	FI	SE	CH	UK(NI)	HR			

**UK Declaration of Conformity (DoC)**

Hereby, "Panasonic Corporation" declares that this product is in compliance with the essential requirements and other relevant provisions of the Radio Equipment Regulations 2017 No.1206.

Customers can download a copy of the original DoC to our RE products from our DoC server:

<https://www.ptc.panasonic.eu/compliance-documents>

Contact in the UK:

Panasonic Testing Centre on behalf of Panasonic UK, a branch of Panasonic Marketing Europe GmbH (Importer)

Maxis 2, Western Road, Bracknell, Berkshire, RG12 1RT

5.15 – 5.35 GHz band is restricted to indoor operations only in the United Kingdom.

Type of wireless	Frequency band	Maximum power (dBm e.i.r.p.)
WLAN	2412 - 2472 MHz	18 dBm
	5180 - 5320 MHz	18 dBm
	5500 - 5700 MHz	18 dBm
	5745 - 5825 MHz	14 dBm
Bluetooth®	2402 - 2480 MHz	4 dBm

Importer for UK:  
Panasonic UK, a branch of  
Panasonic Marketing Europe GmbH  
Maxis 2, Western Road, Bracknell, Berkshire, RG12 1RT

Headquarter Address:  
Panasonic Corporation  
1006 Oaza Kadoma, Kadoma City, Osaka 571-8501, Japan

Authorized Representative in Europe:  
Panasonic Marketing Europe GmbH  
Panasonic Testing Centre  
Winsbergring 15, 22525 Hamburg, Germany

EU



---

**Panasonic Corporation**

Web Site: <https://www.panasonic.com>

En