



if

**ZEN CAN Signature Lowdown**

# ZEN CAN

*Signature*

## 6XX



# SPECIAL BY DESIGN

- ActivEQ is an exact match with the HD 6XX headphone
- End-to-end True Differential balanced circuitry
- Premium parts selection drawn from the £3000 Pro range



# FEATURES

- Adjustable gain to match other headphones
- XSpace analogue headphone spatialiser
- 4.4mm balanced output



# ACTIVEQ

## HD 6XX

- Spectacular balanced midrange

## But...

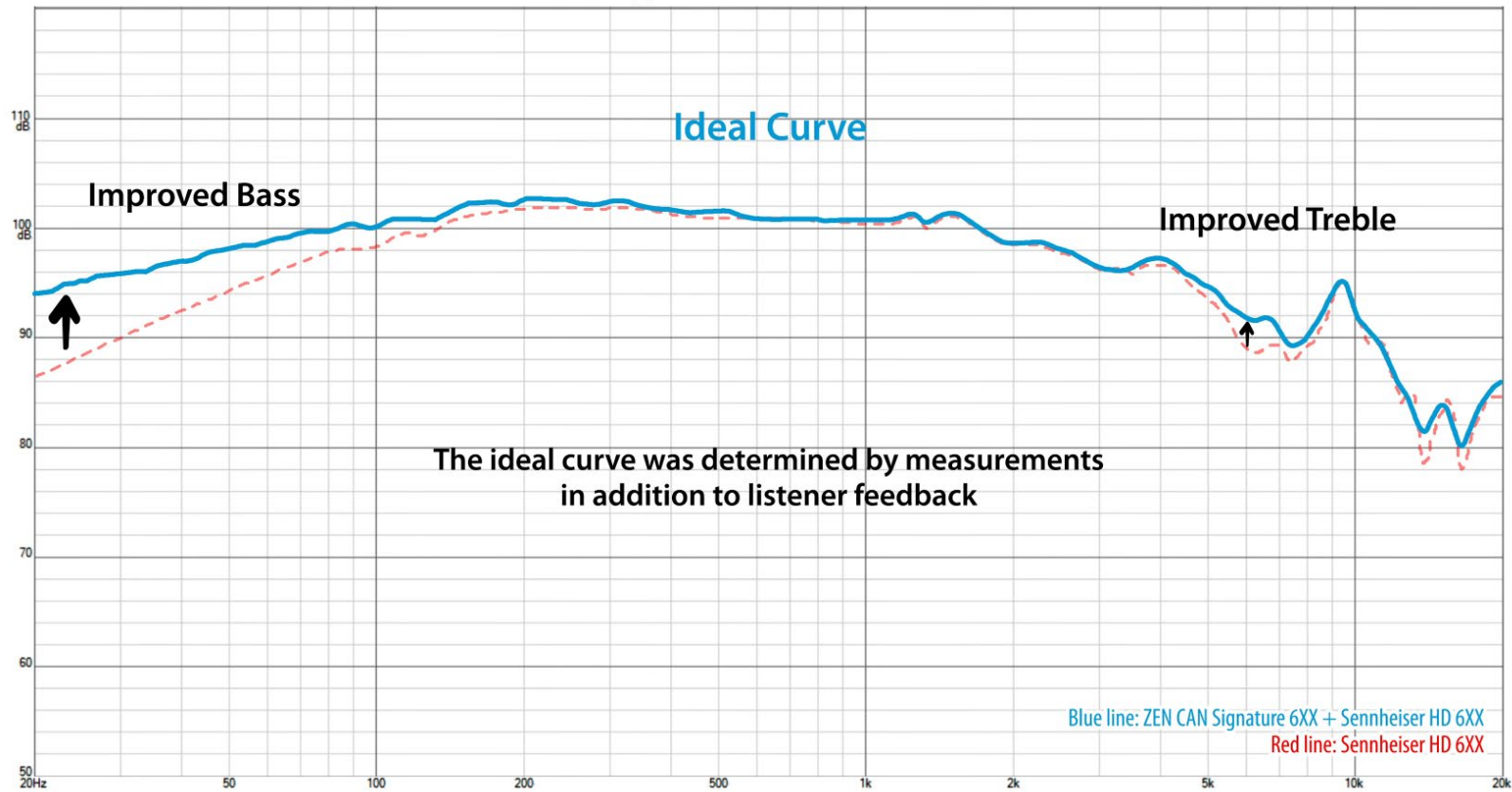
- Bass under 100Hz is rolled off
- Upper treble is a little attenuated
- Upper presence region has significant 'hole' in frequency response

## ActiveEQ

- EQ curve precisely correct
- Active & passive components
- Performed in the analogue domain
- Magical midrange preserved
- SNR and Distortion unaffected



# HEADPHONE MATCH | Sennheiser HD 6XX



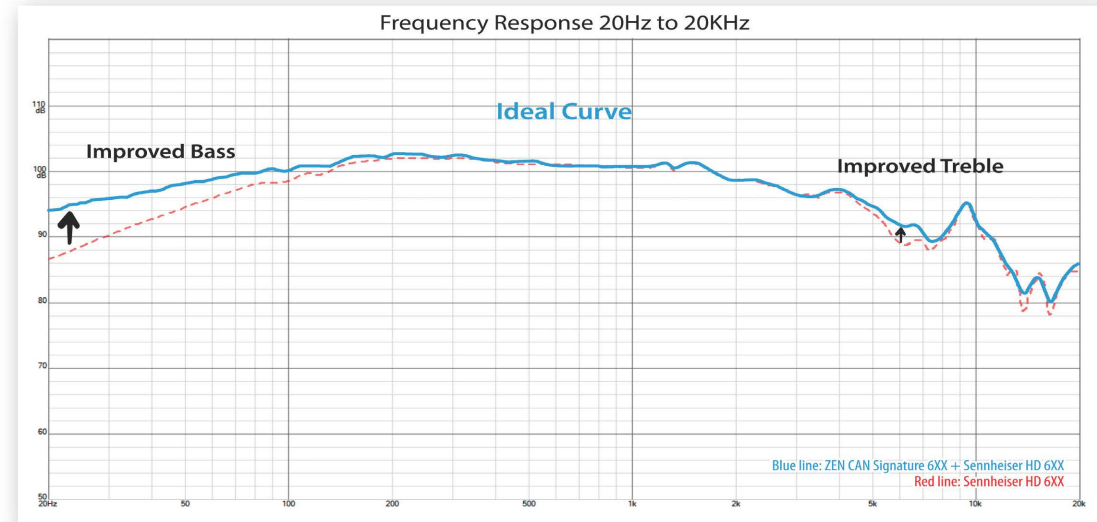
- Works with other Sennheiser headphones

# HEADPHONE MATCH

- ActivEQ can be switched off, making it compatible with all headphones

ZEN CAN  
Signature 6XX

ifi  
audio



## HEADPHONES

## Match to ZEN CAN 6XX Sig\*

Drop HD 6XX	Excellent
Senn HD 650	Excellent
Drop HD 58X	Very good
Senn HD 580	Very good
Senn HD 598	Very good
Senn HD 600	Very good
Senn HD 660S	Very good
Senn HD 700	Fairly good
Senn HD 800 (modified*)	Fairly good
Senn HD 800S	Fairly good
Senn HD 800	Fair
Senn HD 820	Fair
Other headphones	Varies case by case

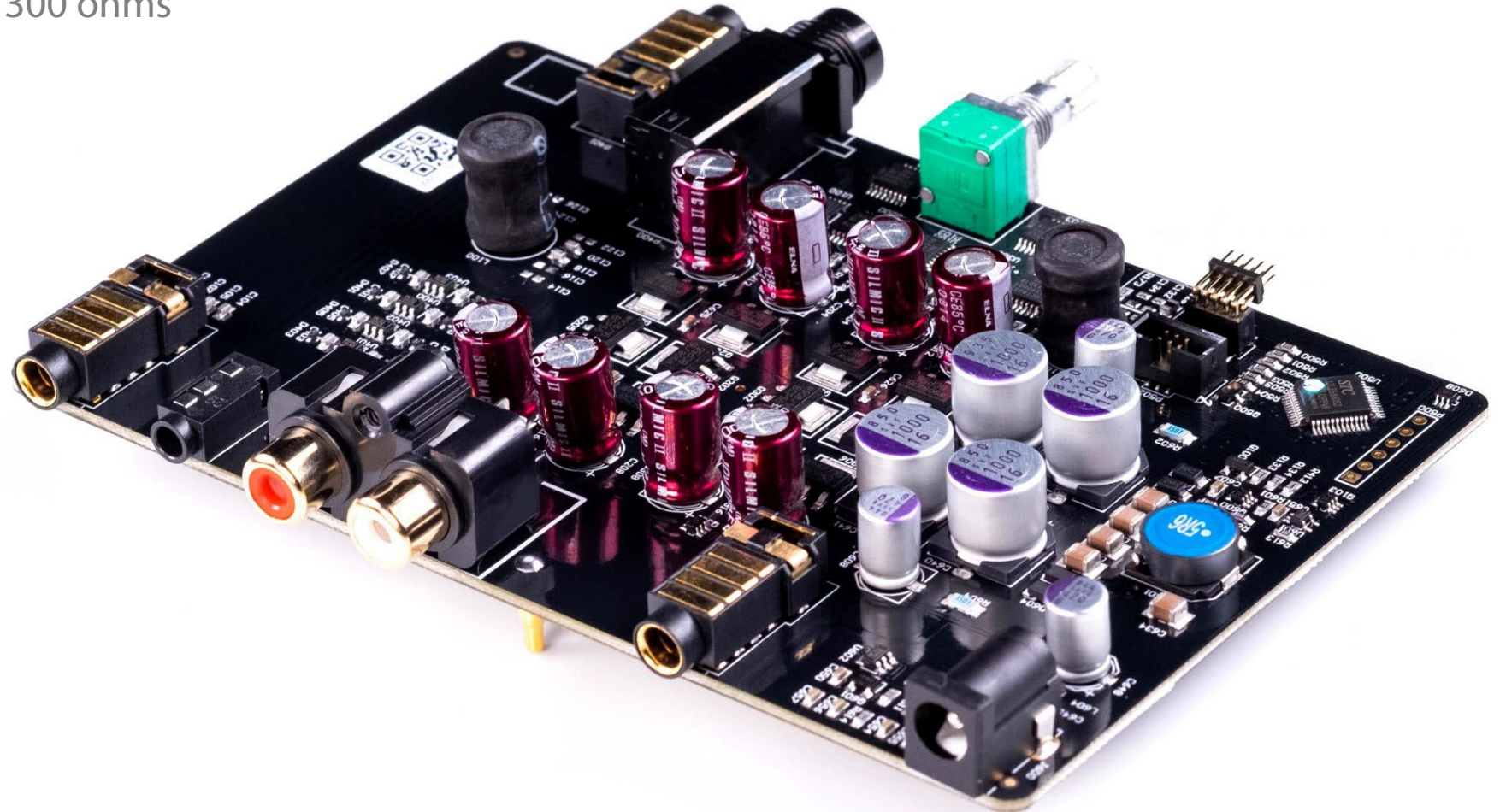


The ideal curve was determined by measurements in addition to listeners' feedback.

\*Super Dupont Resonator modification Source: Inner Fidelity measurements \* With 6XX setting ON

# PRO SERIES | HIGH-END CIRCUIT DESIGN

- Class A output stage from the Pro range
- Drives 15V / 750mW into 300 ohms
- <0.0066% distortion

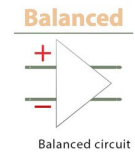




# SUPERIOR DESIGN AND COMPONENTS

**Panasonic OS-CON**  
Excellent noise reduction capability and frequency characteristics

**ELNA®**  
Elna Silmic II capacitors



Black military spec PCB

**TDK**  
COG capacitors  
For audio use with extremely low distortion



Thin Film Resistors  
Power noise & distortion than metal/carbon film

**MOSFET**

Advanced trench technology MOSFET as muting switch  
hence when not in use doesn't affect the sound.

**TOCOS®**  
Tokyo Cosmos Electric Co., Ltd.  
Tokyo Cosmos Electric potentiometer

**ifi**

Low noise/distortion OV2637A ( 0.0001% )  
Performance equals/surpasses many high-end headphone amplifiers



# CONNECTIONS



\*Do not use a power supply higher than 5V  
\*\*Do not connect your headphones to this port



# SPECIFICATIONS

INPUTS	
<b>RCA:</b>	3.5 (SE), 4.4mm (BAL))
<b>Headphone output:</b>	6.35 mm, 4.4 mm
<b>Gain:</b>	0 dB, 6 dB, 12 dB, 18 dB adjust
<b>THD+N (A-Weighting):</b>	0.0066% (BAL), 0.0058% (SE)

<b>Maximum output power (16 ohms)</b>	3.0 V / 600 mW (BAL), 4.0 V / 1000 mW (SE)
<b>Maximum output power (300 ohms)</b>	5.1 V / 756 mW (BAL), 7.6 V / 196 mW (SE)
<b>Maximum output power (600 ohms)</b>	15.2 V / 385 mW (BAL), 7.6 V / 98 mW (SE)

<b>SNR:</b>	122 dB (BAL)
<b>Dynamic range:</b>	-122 dB (BAL)
<b>Frequency response</b>	(-3dB): 10 Hz – 200 kHz
<b>Function Button:</b>	HD6XX adaption and/or XSpace; Bypass
<b>IMD:</b>	0.01%

<b>Maximum power consumption:</b>	13 W / 2.6A
<b>Dimensions:</b>	4.6 x 3.9 x 1.2 in (11.7 x 10 x 3 cm)
<b>Weight:</b>	1.87 lbs (0.85 kg)

<b>Zout (headphone out)</b>	0.25 ohms (SE), 0.5 ohms (BAL)
<b>Zout (balanced line out)</b>	200 ohms

# ABOUT iFi

iFi audio is the sister company of AGL and is headquartered in Southport, UK. It owns the hifi brand Abbingdon Music Research (AMR). They respectively design and manufacture portable and desktop 'ultra-fidelity' audio products and high-end audio 'home-based' components. The combined in-house hardware and software development team enables iFi audio and AMR to bring to market advanced audio products.

For further information, please contact  
[comms@ifi-audio.com](mailto:comms@ifi-audio.com)  
+44 (0) 1704 543 858

The image features a dynamic, multi-colored powder explosion against a white background. The colors include bright yellow, orange, red, magenta, and blue, all radiating from a central point. The powder particles are captured in mid-air, creating a sense of movement and energy. In the center of this colorful burst, the lowercase letters 'ifn' are printed in a clean, white, serif typeface. The 'i' has a distinct dot, and the 'f' and 'n' are connected, giving the text a classic, elegant appearance. The overall composition is balanced and visually striking due to the contrast between the vibrant colors and the white text and background.

ifn